

aMbooo Tec Styx installation guide

Styx installation guide with Hat-Channel or wooden substructure

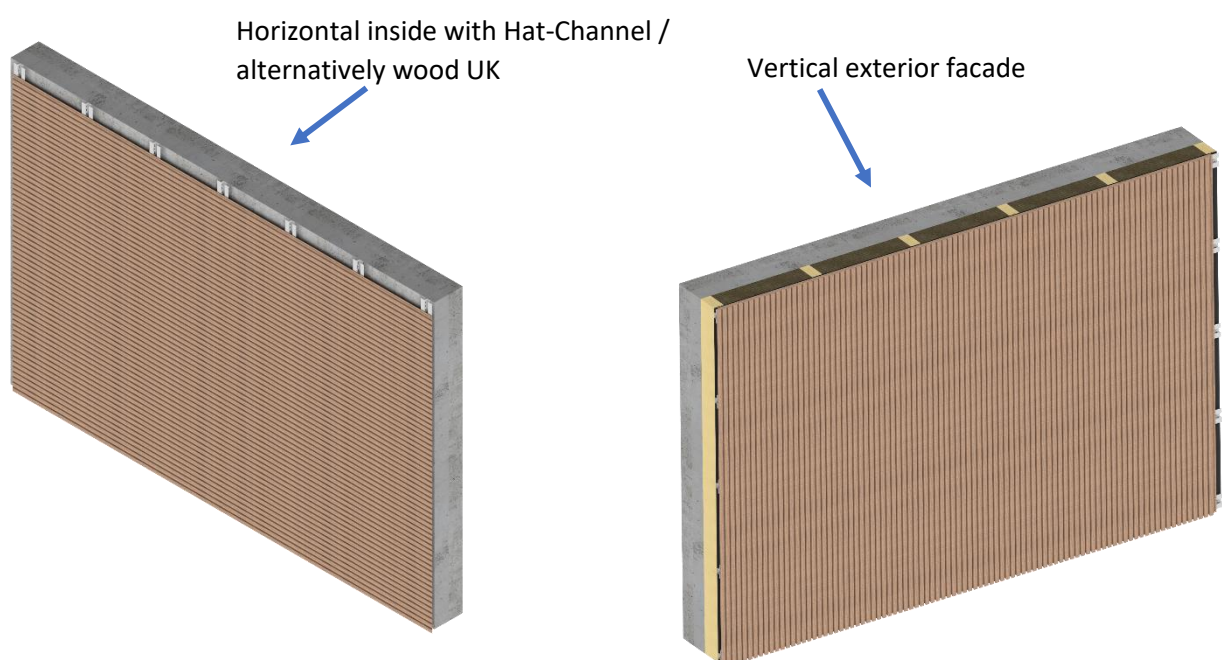
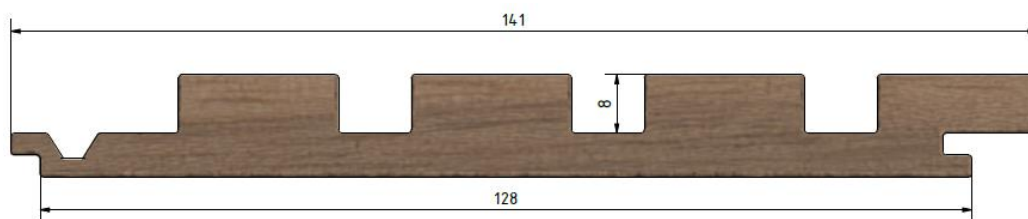
Styx facade profile

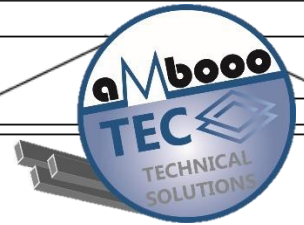
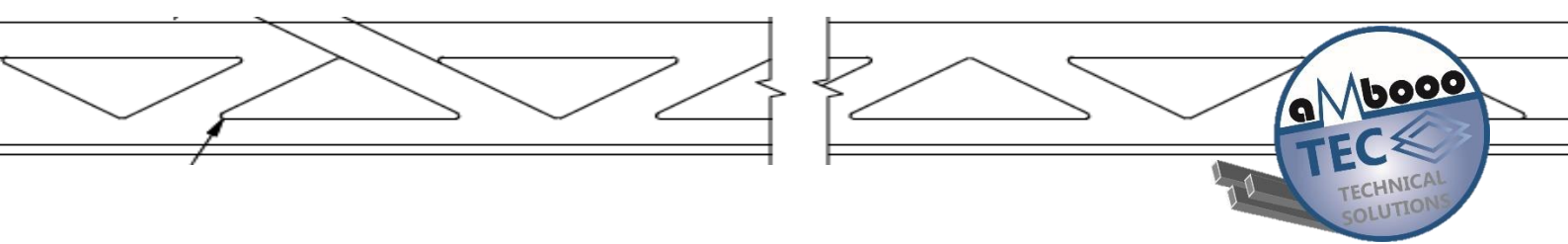
Dimension: 14x141x2032 oder 2500mm
Material: HCS bambo boards

Due to its shape, the Styx profile can be used both vertically and horizontally. Horizontal use is only suitable for indoor use.

The distance between the substructures must not exceed 500mm. 3.5mm countersunk head stainless steel screws must be used for fastening. Pre-drilling is recommended. The length is determined by the substructure.

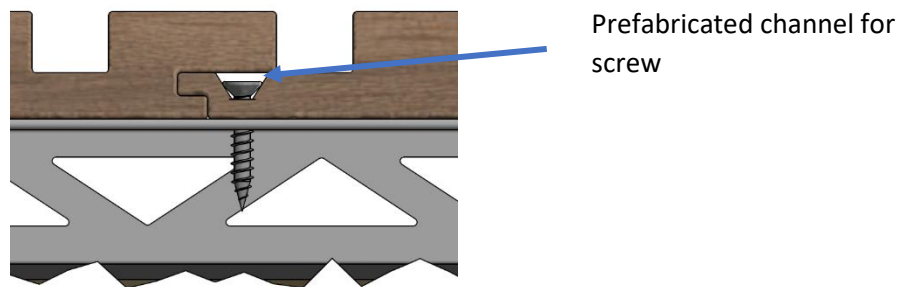
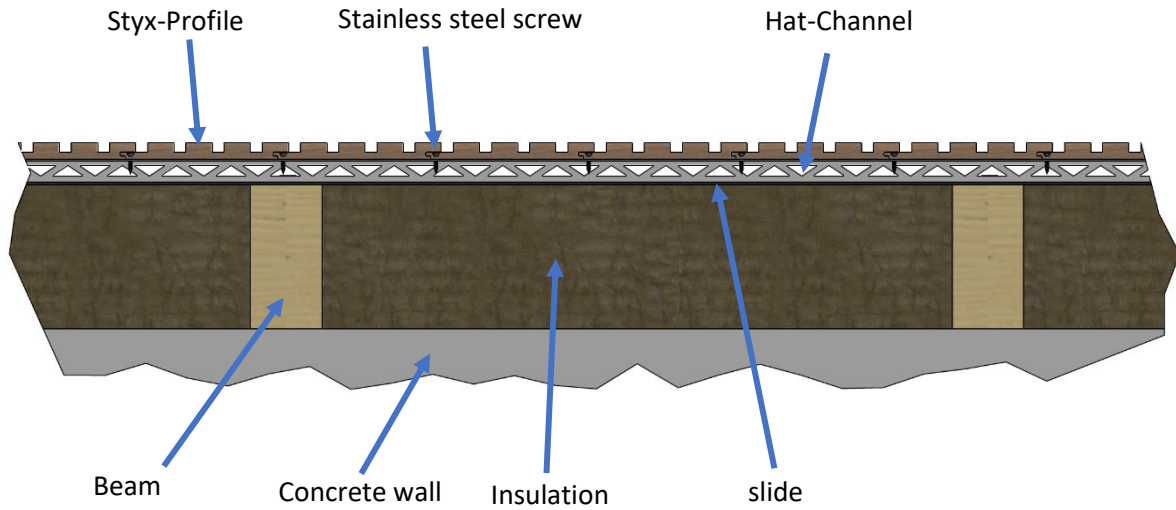
Drawing:



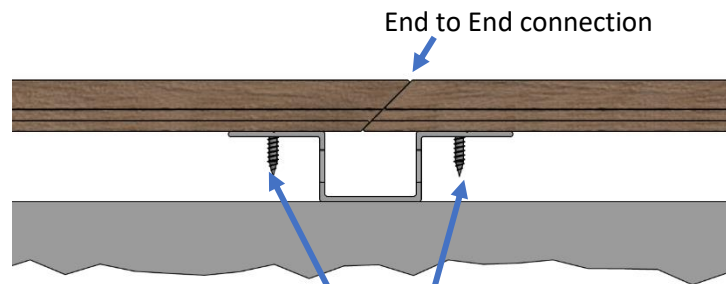
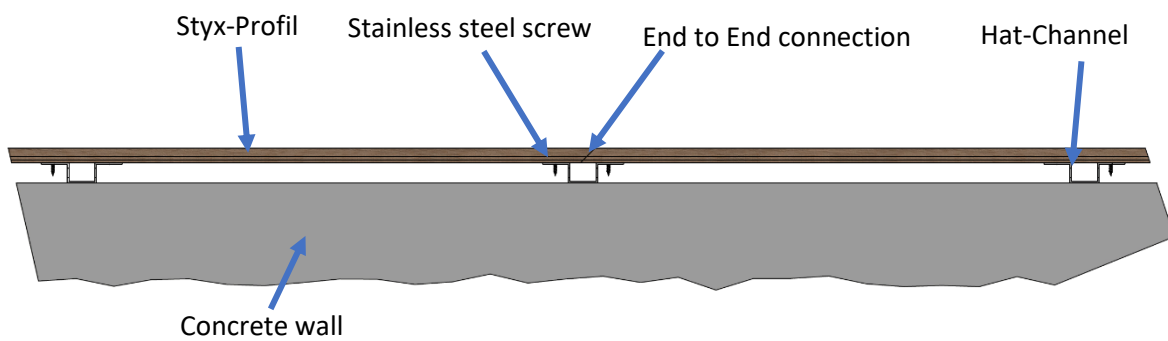


View:

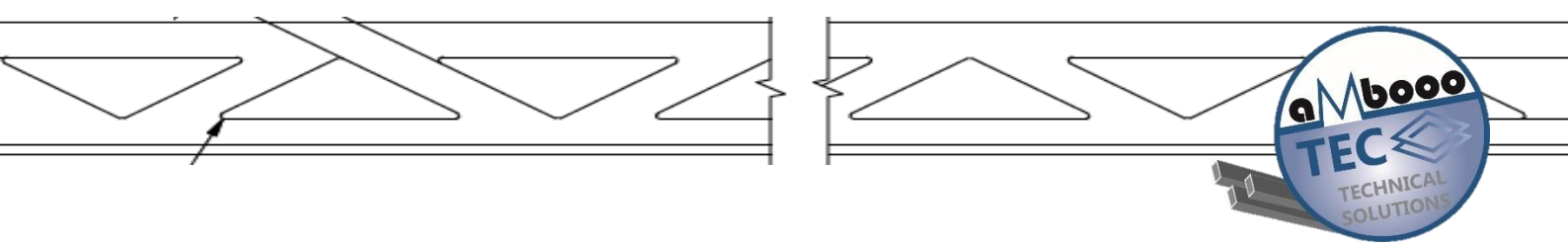
Vertical:



Horizontal:



Double screw connection



View:

